



Welcome
Back to School
2019 - 2020

FOURTH GRADE



Teachers

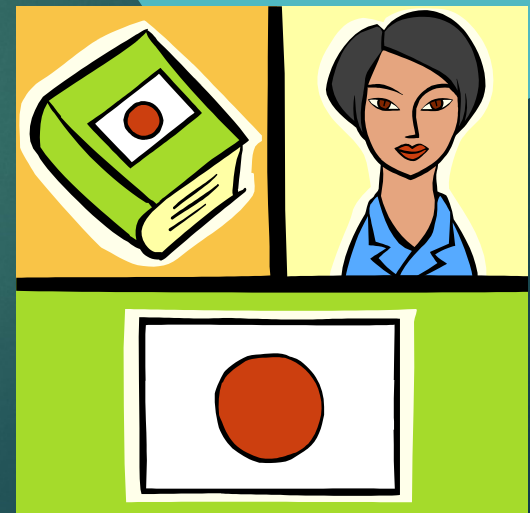
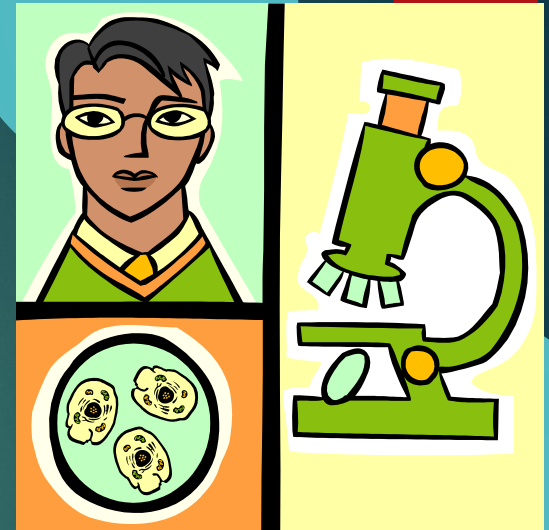
Concetta Gallardo
cgallardo@bcps.org

Olivia Martin
omartin2@bcps.org

Melissa Patek
mpatek@bcps.org

Mrs. Vitek
avitek@bcps.org

Mr. Wade
rwade@bcps.org





Pasted in
the
agenda.

Monday	Tuesday	Wednesday	Thursday	Friday
9:00 - 9:15 Opening Exercises	9:00 - 9:15 Opening Exercises	9:00 - 9:15 Opening Exercises	9:00 - 9:15 Opening Exercises	9:00 - 9:15 Opening Exercises
9:15 - 10:15 <u>Soc. Studies</u> or Science	9:15 - 10:15 <u>Soc. Studies</u> or Science	9:15 - 10:15 <u>Soc. Studies</u> or Science	9:15 - 10:15 <u>Soc. Studies</u> or Science	9:15 - 10:15 <u>Soc. Studies</u> or Science Patek Exp. Music 9:20-10:10
10:20 - 11:10 Lib.: Martin <u>Expl.:</u> Vitek Mus: Patek	10:20 - 11:10 Art: Martin Mus: Vitek	10:20 - 11:10 Mus.: Martin Expl.: Wade Art: Vitek	10:20 - 11:10 PE: Martin Art: Patek Mus.: Wade Lib.: Vitek	10:20 - 11:10 <u>Expl.:</u> Martin Art: Wade PE: Vitek
11:15 - 12:40 Math	11:15 - 12:40 Math	11:15 - 12:40 Math	11:15 - 12:40 Math	11:15 - 12:40 Math
12:50 - 1:20 Lunch	12:50 - 1:20 Lunch	12:50 - 1:20 Lunch	12:50 - 1:20 Lunch	12:50 - 1:20 Lunch
1:20-2:20 ELA	1:20-2:20 ELA	1:20-2:20 ELA	1:20-2:20 ELA	1:20-2:20 ELA
2:20-2:40 Recess	2:20-2:40 Recess	2:20-2:40 Recess	2:20-2:40 Recess	2:20-2:40 Recess
2:40 - 3:40 ELA	2:40 - 3:40 ELA	2:40 - 3:40 ELA	2:40 - 3:40 ELA	2:40 - 3:40 ELA

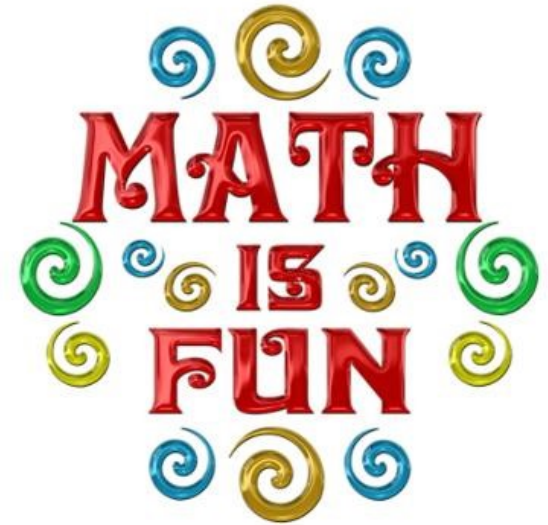
Specials


- ▶ Library – Please encourage your child to return all books they borrow.
 - ▶ Martin on Monday; Wade on Tuesday; Patek on Wednesday; Vitek on Thursday.
- ▶ Vocal Music – Winter concert December, Spring concert May
- ▶ Phys. Ed. – must wear tennis shoes to participate
- ▶ Art – a smock will be needed periodically
- ▶ Exploratory Music – exposure to a brass, woodwind and string instrument

English Language Arts

- ▶ Reading Standards for Literature
- ▶ Reading Standards for Informational Text
- ▶ Reading Standards: Foundational Skills
- ▶ Writing Standards
- ▶ Speaking and Listening Standards
- ▶ Language Standards

What About Math?



$\sqrt{-1}$ 
Math

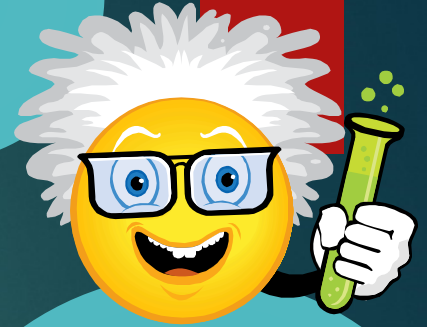
Unit	Title of Unit	Topics
1	Place Value / Adding and Subtracting	<ul style="list-style-type: none"> • Generalize Place Value Understandings (1) • Fluently Add and Subtract Multi-Digit Whole Numbers (2)
2	Strategies and Properties of Multiplication	<ul style="list-style-type: none"> • Factors and Multiples (7) • Use Strategies and Properties to Multiply by 1-Digit Numbers (3) • Use Strategies and Properties to Multiply by 2-Digit Numbers (4)
3	Strategies and Properties of Division	<ul style="list-style-type: none"> • Use Strategies and Properties to Divide by 1-Digit Numbers (5) • Use Operations with Whole Numbers to Solve Problems (6)
4	Fractions	<ul style="list-style-type: none"> • Extend Understanding of Fraction Equivalence and Ordering (8) • Understand Addition and Subtraction of Fractions (9) • Extend Multiplication Concepts to Fractions (10)
5	Decimal Relations / Data and Measurement	<ul style="list-style-type: none"> • Understand and Compare Decimals (12) • Represent and Interpret Data on Line Plots (11) • Measurement: Find Equivalence in Units of Measure (13)
6	Patterns and Geometry	<ul style="list-style-type: none"> • Algebra: Generate and Analyze Patterns (14) • Line, Angles, and Shapes (16) • Geometric Measurement: Understand Concepts of Angles and Angle Measurement (15)

• Pearson
enVision.

• Dreambox
– 3 to 4
lessons/week
– Do not help
your children

• Students are
expected to
know all basic
facts

Science



Earth's Systems:

- Geologic Journeys

Energy:

- Rubbish Rescue
- STEM Fair project

Structure and Function:

- Turtle Trouble

STEM Fair

All students will complete STEM projects within a small group during school in February.



Social Studies

- Earliest Americans (Native Americans)
- The Age of Encounters (Exploration)
- English Colonies
- Geography and Economics of the United States



Health – 3 Modules

- Components of Wellness

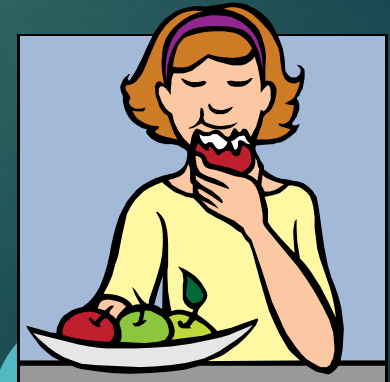
- (meeting basic needs – physical, emotional, mental, and social)

- Safety

- (personal safety and fire prevention to prevent injury)

- Fitness and Nutrition

- (physical fitness, balanced diet)



BCPS Grading Policy

Our Guiding Practices

- | |
|--|
| 1. Grading practices must be supportive of student learning. |
| 2. Marking-period grades will be based solely on achievement of course or grade-level standards. |
| 3. Students will have multiple opportunities to demonstrate proficiency. |
| 4. Grades will be based on a body of evidence aligned to standards. |
| 5. A consistent grading scale will be used to score assignments and assessments. |
| 6. Accommodations and modifications will be provided for exceptional learners. |

Questions About Grading and Reporting

The screenshot shows a web browser window with the address bar displaying "www.bcps.org". The website has a navigation bar with the following tabs: Schools, Students, Parents, Community, Calendars, Leadership, and System. The "Parents" tab is active, and a dropdown menu is open, listing the following options: Parent Resources, BCPS One, Growing Up Digital, myBCPS Account, Parent University, Grading and Reporting (highlighted), Graduation Requirements, Find Schools by Home Address, School Calendar, Student Handbook, and Volunteer with BCPS. Below the navigation bar, there are several images of students and teachers. At the bottom of the page, there is a banner for a "BCPS Job Fair for special education teachers, speech pathologists" scheduled for Wednesday, Aug. 29, from 4 – 6 p.m., at 6901 N. Charles St., Building E. The browser's taskbar at the bottom shows various application icons and the system clock indicating 12:03 PM on 8/31/2018.

Baltimore County Public Schools

Not secure | www.bcps.org

Schools Students Parents Community Calendars Leadership System

Parent Resources
BCPS One
Growing Up Digital
myBCPS Account
Parent University
Grading and Reporting
Graduation Requirements
Find Schools by Home Address
School Calendar
Student Handbook
Volunteer with BCPS

BCPS Job Fair for special education teachers, speech pathologists
Wednesday, Aug. 29, from 4 – 6 p.m., 6901 N. Charles St., Building E

www.bcps.org/academics/grading/

12:03 PM
8/31/2018



Grading

To determine achievement grades for students in Grades 3–12, consider overall evidence of student performance using the following guidance:

A	Outstanding	Students performing at this level demonstrate a distinguished and strong command of the knowledge, skills, and practices embodied by the standards. Students at this level are meeting or extending the standards at their grade level.
B	Above Average	Students performing at this level demonstrate a moderate command of the knowledge, skills, and practices embodied by the standards. Students at this level are approaching the standards at their grade level.
C	Average	Students performing at this level demonstrate a developing command of the knowledge, skills, and practices embodied by the standards at their grade level.
D	Below Average	Students performing at this level demonstrate a beginning command of the knowledge and/or skills embodied by the standards assessed at their grade level.
E	Failing	Students performing at this level demonstrate no evidence of the knowledge, skills, and practices embodied by the standards assessed at their grade level.

A 90% - 100%

B 80% - 89%

C 70% - 79%

D 60% - 69%

E 50% - 59%

Attendance

- ▶ Attendance in school is mandatory.
- ▶ Each student is expected to have a 94% or better attendance rate.
- ▶ Attendance effects daily success and impacts your child's score on the MAP test.

Formal Testing

- ▶ Measure of Academic Progress (MAPGrowth)
 - ▶ To track academic growth
 - ▶ Beginning and middle of the year
 - ▶ Reading and math
- ▶ Maryland Comprehensive Assessment Program (MCAP)
 - ▶ April and May
 - ▶ Reading and Math

¿Hablan Español?

- ▶ 30 minutes of Spanish conversation each week with Sr. Gallardo.
- ▶ Forty minutes of online modules each week.



Homework/Agenda

- ▶ Students record daily assignments.
- ▶ Parents review nightly.
- ▶ Comment section at bottom is a way to communicate with teacher.
- ▶ Read each night for at least 15 minutes.



Field Trips

- ▶ Camp Puh' Tok
 - ▶ October 4th Wade and Patek
 - ▶ October 11th Martin and Vitek
- ▶ One Straw Farm for Days of Taste
- ▶ Annapolis
 - ▶ Friday, May 29, 2019



Volunteers

- ▶ Field Trips –
Especially Camp
Puh Tok
- ▶ Room Parents
- ▶ Classroom
 - ▶ Holiday parties
 - ▶ Copying



Please remember all volunteers must complete the online volunteer training which can be accessed at http://hamptones.bcps.org/parents/volunteer_training

Puh Tok Volunteers Needed!

Wanted: 4th Grade Field Trip Parent Help

Parents willing to train and lead stations
on the Native American culture.

The 4th grade will be visiting Camp Puh' Tok on
Wednesday, October 17th (Mrs. DiLella and Mrs. Vitek)
and

Thursday, October 18th (Mr. Wade and Ms. Patek)

Each day, ten parents are needed to run the 5 stations:

Face Painting and Cordage, Games, Fire and Legend,

Drumming and Dance, Tools and Dwellings

Interested parents must be available:

Monday, September 24, for a ½ day training session at the camp
(9:00-12:00)

and

either Wednesday October 17th or Thursday, October 18th,

9:00 a.m. - 3:00 p.m. to run the stations.

(Camp Puh tok is located off the Hereford exit of Interstate 83.)

Please return this tear-off to your child's homeroom teacher if interested by 9/17.

Our Website

► <http://hamptones.bcps.org/>

The background is a dark teal color. It features several large, overlapping circles in a lighter teal shade. In the top right corner, there is a small red vertical rectangle.

Thank you
for
coming!

Buenas Noches!